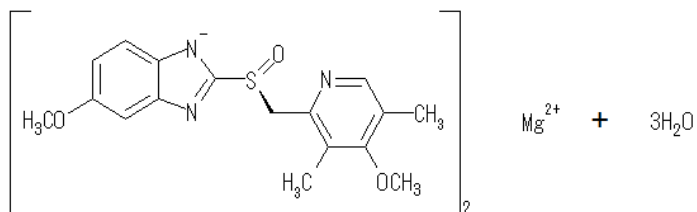


U.S. Pharmacopeia method



Esomeprazole Magnesium :Enantiomeric Purity



Column : CHIRALPAK® AGP 0.40cmΦ × 10cmL (L41)

Mobile phase : Acetonitrile / Solution A = 3 / 17 (v / v)

Flow rate : 0.6mL/min.

Injection volume : 20μL

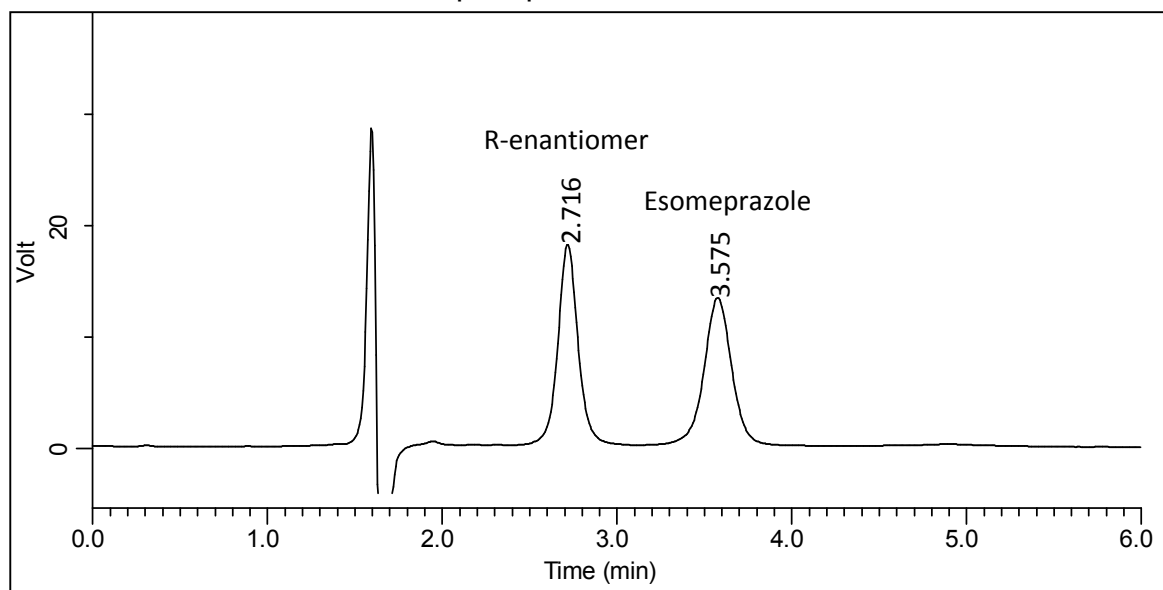
UV detection : 302nm

※ Solution A : Mix 70 mL of 1 M monobasic sodium phosphate with 20 mL of 0.5 M dibasic sodium phosphate, and dilute with water to 1000 mL. Dilute 250 mL of this solution with water to 1000 mL.

System suitability

Sample: 2 mg of USP Omeprazole RS in 10 mL of *Diluent*. Dilute 1.0 mL of this solution with *Diluent* to 50 mL.

Diluent: Mix 11 mL of 0.25 M tribasic sodium phosphate with 22 mL of 0.5 M dibasic sodium phosphate, and dilute with water to 1000 mL.



	Requirement	Result
Resolution	≥ 3	3.6