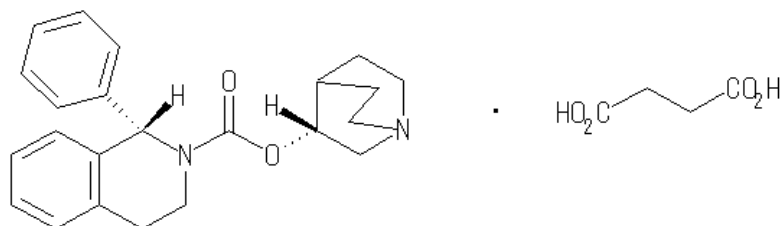


## Solifenacin succinate : Isomeric purity



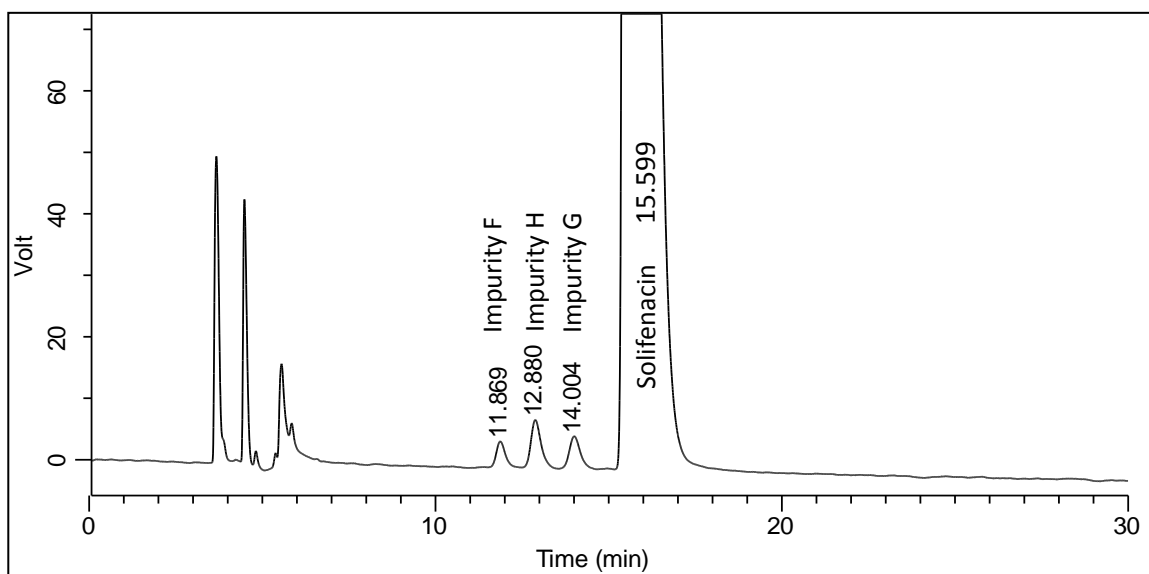
Column : CHIRALPAK® AD-H 0.46cmΦ × 25cmL  
 Mobile phase : Diethylamine / Anhydrous ethanol / Heptane = 0.1 / 200 / 800 (v / v / v)  
 Flow rate : 0.8mL/min.  
 Injection volume : 10μL  
 Column temperature : 35°C  
 UV detection : 220nm

### System suitability

#### Reference solution (a):

Dissolve the contents of a vial of *Solifenacin for system suitability CRS* (containing impurities F, G and H) in 1.0 mL of the mobile phase.

Relative retention with reference to Solifenacin (retention time = about 17 min):  
 impurity F = about 0.7 ; impurity H = about 0.76 ; impurity G = about 0.84.



	Requirement	Result
Resolution	Minimum 1.5 between the peaks due to impurities F and H	2.1
Peak-to-valley ratio	Minimum 10, where $H_p$ = height above the baseline of the peak due to impurity G and $H_v$ = height above the baseline of the lowest point of the curve separating this peak from the peak due to impurity-H.	108