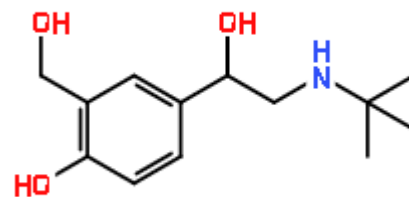


## APPLICATION RESULTS

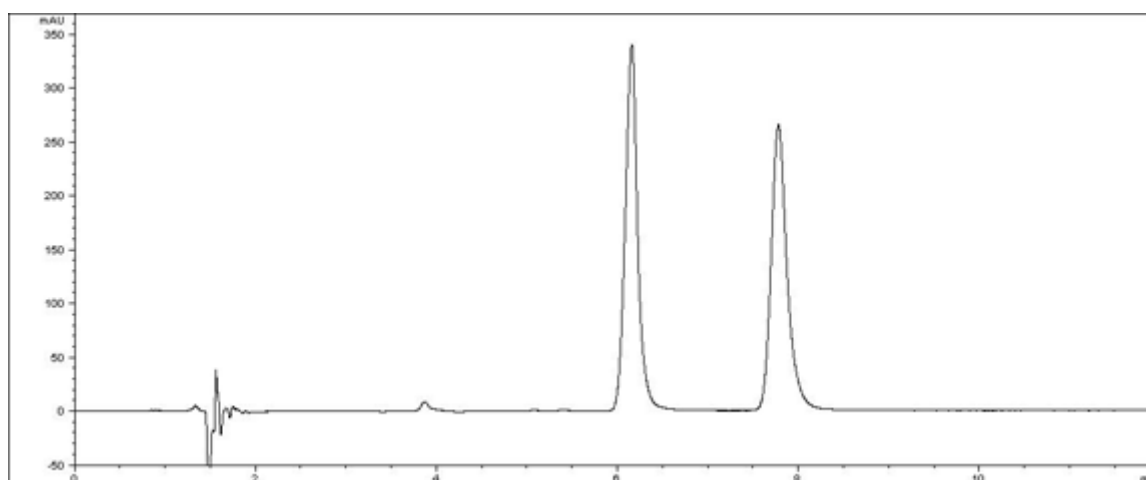
## COMPOUND IDENTIFICATION

Compound Name

Salbutamol



## CHROMATOGRAM



## ANALYTICAL REPORT

Column Trade Name	CHIRALPAK® ZWIX(+)		
Column Size (Particle Size)	3 x 150 mm (3 µm)		
Mobile Phase Composition	12.5mM 2-amino-1-butanol in methanol / tetrahydrofuran / water = 49 / 49 / 2		
Chromatographic Mode	Polar Phase		

Flow rate (mL/min)	0.5	Temperature (°C)	25
Injection Volume (µL)	0.0025 (mg)	Sample Concentration	
Detection	UV-VIS 230 nm		
Elution Order			

No.	Rt	K'	Alpha Value	Resolution
1	6.2	2.34	1 - 2	6.04
2	7.8	3.22		