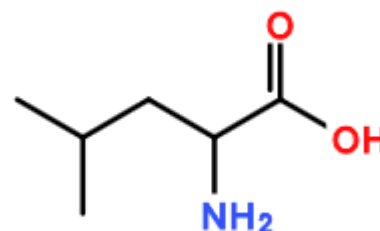


## APPLICATION RESULTS

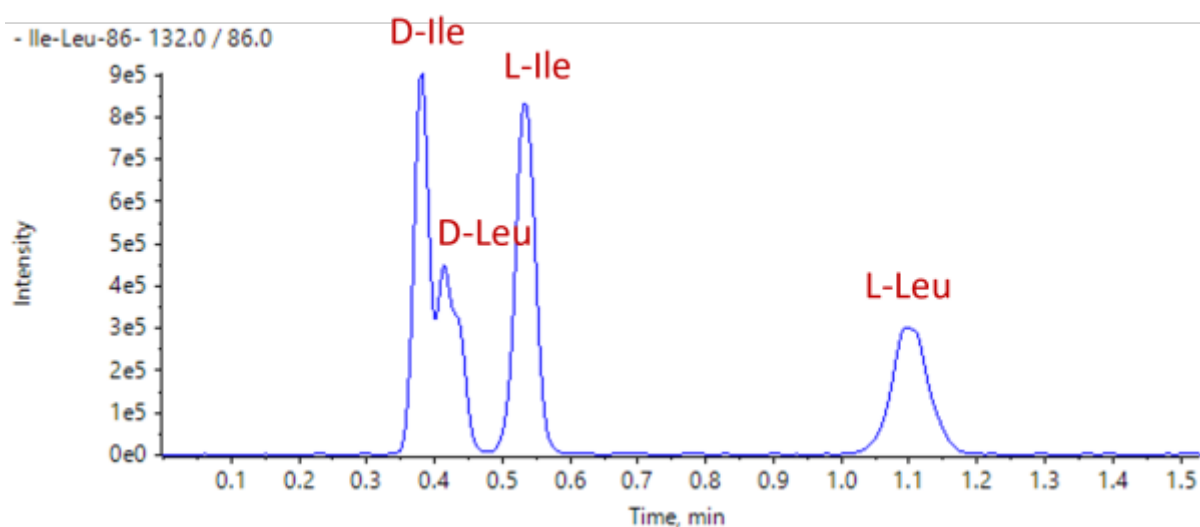
## COMPOUND IDENTIFICATION

Compound Name

DL-Leucine



## CHROMATOGRAM



## ANALYTICAL REPORT

Column Trade Name	CROWNPAK® CR-I(+)		
Column Size (Particle Size)	3 x 150 mm (5 µm)		
Mobile Phase Composition	CO <sub>2</sub> / methanol / water / trifluoroacetic acid = 70 / 27 / 3 / 0.15		
Chromatographic Mode	SFC		
Flow rate (mL/min)	3.0	Temperature (°C)	30
Injection Volume (µL)	1	Sample Concentration	2.6 mg/mL
Detection	LC-MS		
Elution Order			

No.	Rt	K'	Alpha Value	Resolution
1	0.4		1 - 2	7.86
2	1.1			

Comment

This data was provided by Professor Bamba of Kyushu University.

References ;

Ultrafast simultaneous chiral analysis of native amino acid enantiomers using supercritical fluid chromatography/tandem mass spectrometry

Journal of Chromatography A 1677 (2022) 463305