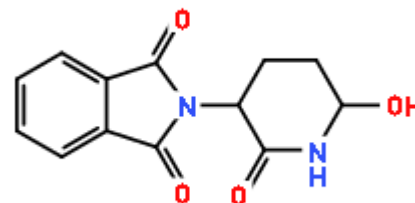


## APPLICATION RESULTS

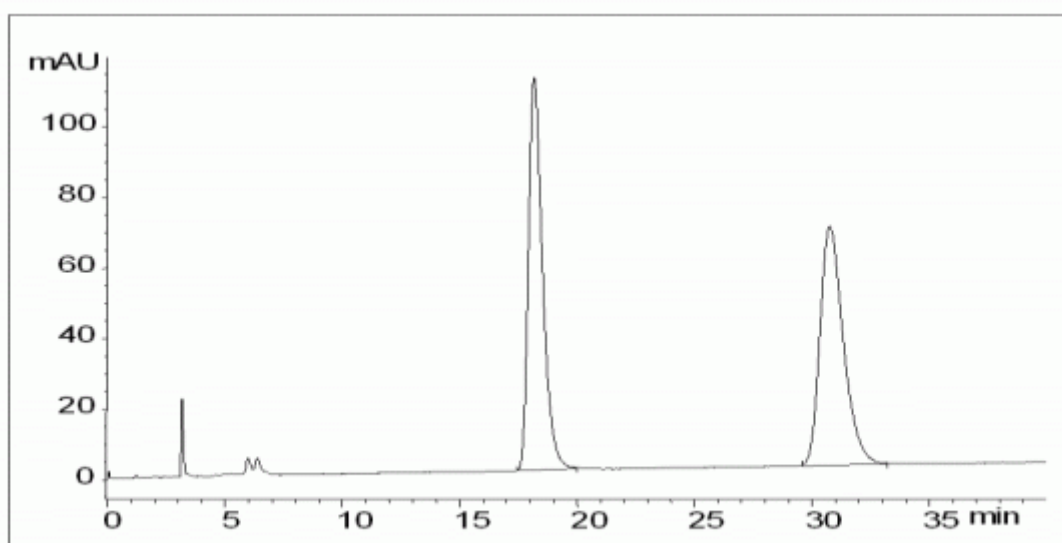
## COMPOUND IDENTIFICATION

Compound Name

Thalidomide



## CHROMATOGRAM



## ANALYTICAL REPORT

|                             |                               |                      |    |
|-----------------------------|-------------------------------|----------------------|----|
| Column Trade Name           | CHIRALCEL® OJ-H               |                      |    |
| Column Size (Particle Size) | 4.6 x 250 mm (5 µm)           |                      |    |
| Mobile Phase Composition    | n-heptane / ethanol = 50 / 50 |                      |    |
| Chromatographic Mode        | Normal Phase                  |                      |    |
| Flow rate (mL/min)          | 1                             | Temperature (°C)     | 25 |
| Injection Volume (µL)       | 0.01 (mg)                     | Sample Concentration |    |
| Detection                   | UV-VIS 210 nm                 |                      |    |
| Elution Order               |                               |                      |    |

| No. | Rt   | K'   | Alpha Value | Resolution |
|-----|------|------|-------------|------------|
| 1   | 18.2 | 5.06 | 1 - 2       | 8.80       |
| 2   | 30.8 | 9.26 |             |            |