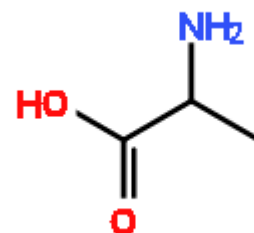


APPLICATION RESULTS

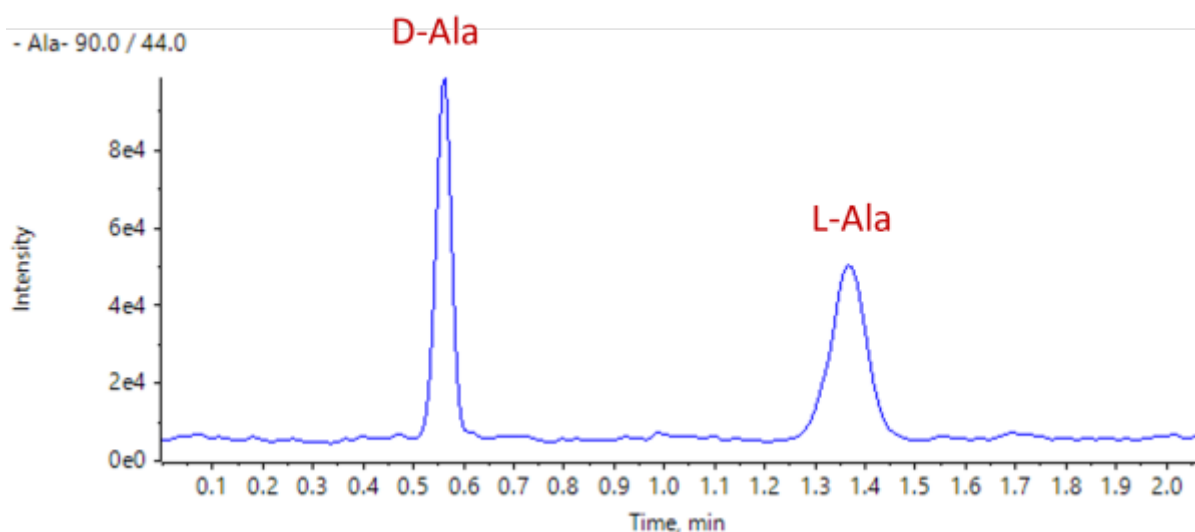
COMPOUND IDENTIFICATION

Compound Name

DL-Alanine



CHROMATOGRAM



ANALYTICAL REPORT

Column Trade Name Column Size (Particle Size)	CROWNPAK [®] CR-I(+) 3 x 150 mm (5 μm)		
Mobile Phase Composition	CO ₂ / methanol / water / trifluoroacetic acid = 70 / 27 / 3 / 0.15		
Chromatographic Mode	SFC		
Flow rate (mL/min)	3.0	Temperature (°C)	30
Injection Volume (μL)	1	Sample Concentration	1.8 mg/mL
Detection	LC-MS		
Elution Order			

No.	Rt	K'	Alpha Value	Resolution
1	0.6		1 - 2	8.53
2	1.4			

Comment

This data was provided by Professor Bamba of Kyushu University.

References ;

Ultrafast simultaneous chiral analysis of native amino acid enantiomers using supercritical fluid chromatography/tandem mass spectrometry

Journal of Chromatography A 1677 (2022).463305