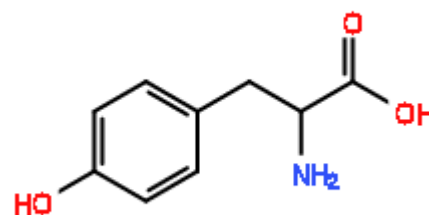


APPLICATION RESULTS

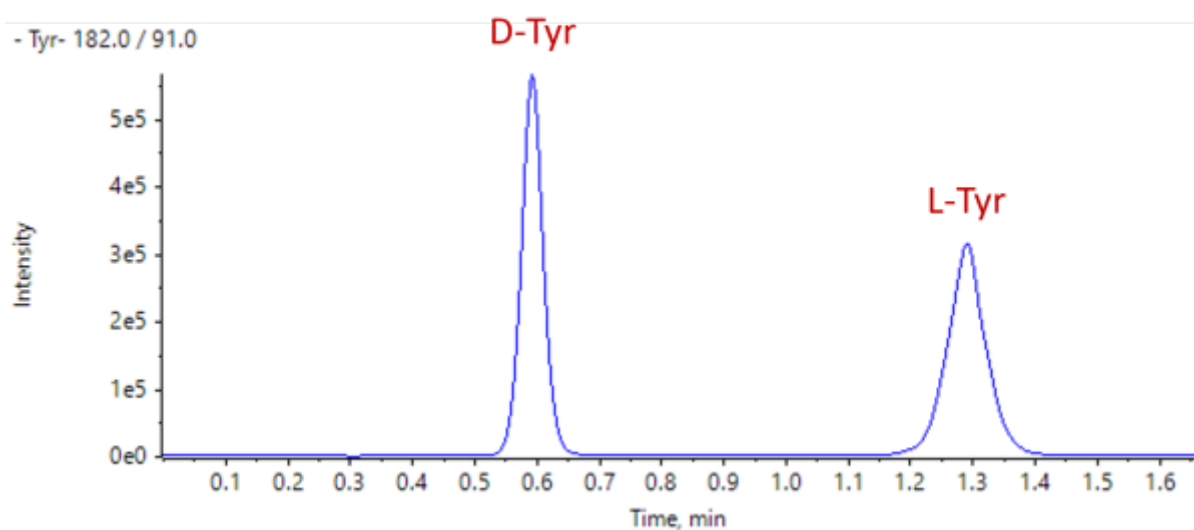
COMPOUND IDENTIFICATION

Compound Name

DL-Tyrosine



CHROMATOGRAM



ANALYTICAL REPORT

| | | | |
|-----------------------------|--|----------------------|-----------|
| Column Trade Name | CROWNPAK® CR-I(+) | | |
| Column Size (Particle Size) | 3 x 150 mm (5 µm) | | |
| Mobile Phase Composition | CO ₂ / methanol / water / trifluoroacetic acid = 70 / 27 / 3 / 0.15 | | |
| Chromatographic Mode | SFC | | |
| Flow rate (mL/min) | 3.0 | Temperature (°C) | 30 |
| Injection Volume (µL) | 1 | Sample Concentration | 3.6 mg/mL |
| Detection | LC-MS | | |
| Elution Order | | | |

| No. | Rt | K' | Alpha Value | Resolution |
|-----|-----|----|-------------|------------|
| 1 | 0.6 | | 1 - 2 | 8.91 |
| 2 | 1.3 | | | |

Comment

This data was provided by Professor Bamba of Kyushu University.

References ;

Ultrafast simultaneous chiral analysis of native amino acid enantiomers using supercritical fluid chromatography/tandem mass spectrometry

Journal of Chromatography A 1677 (2022) 463305