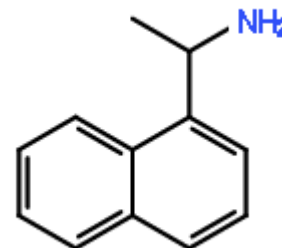


APPLICATION RESULTS

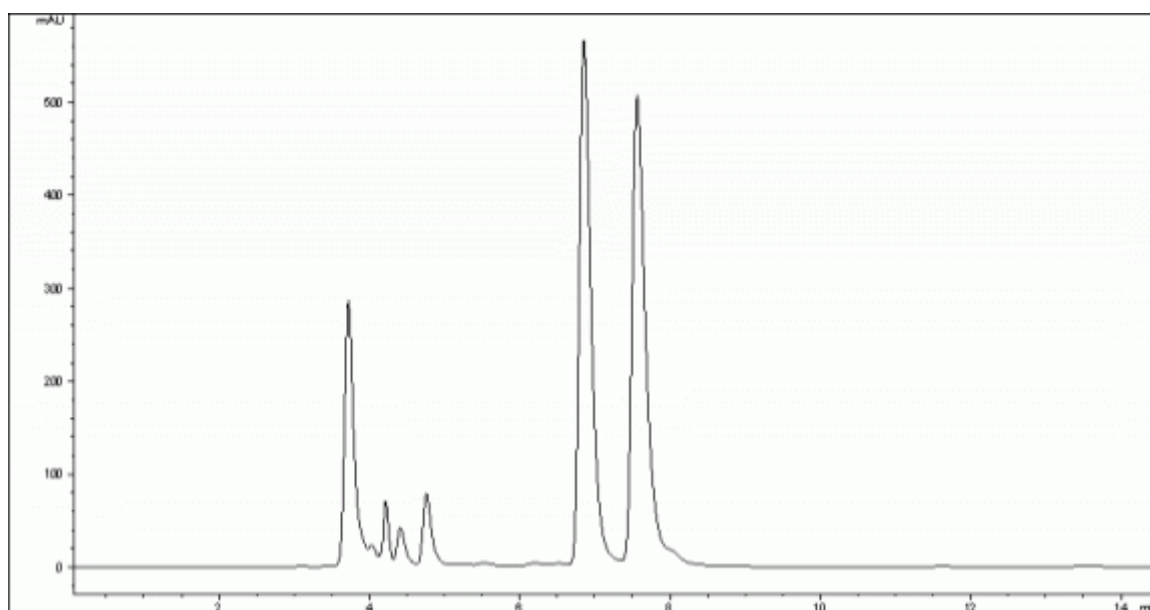
COMPOUND IDENTIFICATION

Compound Name

1-(1-Naphthyl)-ethylamine



CHROMATOGRAM



ANALYTICAL REPORT

| | | | |
|-----------------------------|--|----------------------|----|
| Column Trade Name | CHIRALCEL® OZ-H | | |
| Column Size (Particle Size) | 4.6 x 250 mm (5 µm) | | |
| Mobile Phase Composition | n-hexane / 2-propanol / diethylamine = 90 / 10 / 0.1 | | |
| Chromatographic Mode | Normal Phase | | |
| Flow rate (mL/min) | 1 | Temperature (°C) | 25 |
| Injection Volume (µL) | 0.01 (mg) | Sample Concentration | |
| Detection | UV-VIS 270 nm | | |
| Elution Order | | | |

| No. | Rt | K' | Alpha Value | Resolution |
|-----|-----|------|-------------|------------|
| 1 | 6.9 | 1.28 | 1 - 2 | 2.44 |
| 2 | 7.6 | 1.52 | | |