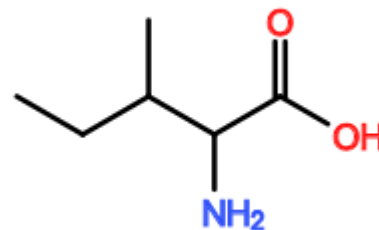


APPLICATION RESULTS

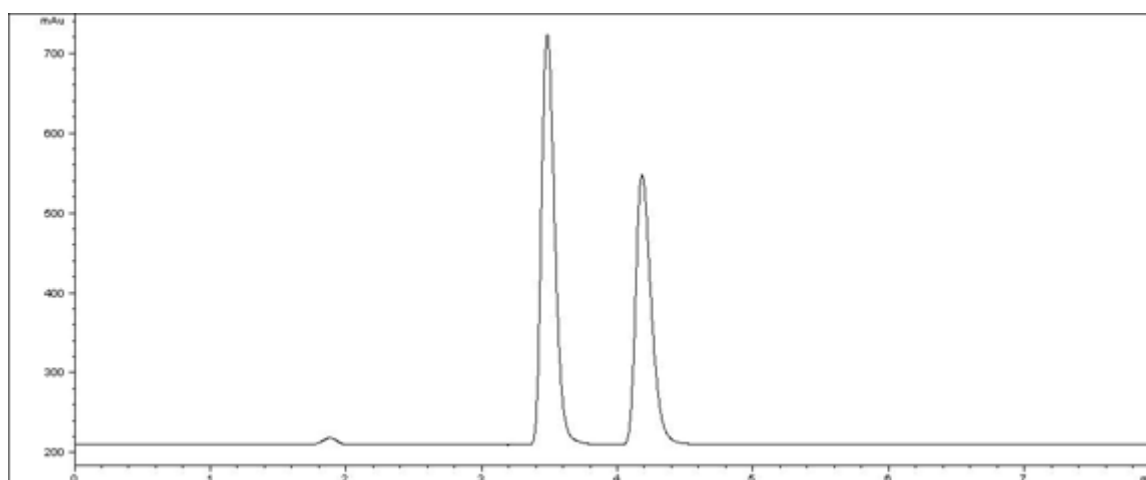
COMPOUND IDENTIFICATION

Compound Name

DL-Isoleucine



CHROMATOGRAM



ANALYTICAL REPORT

Column Trade Name Column Size (Particle Size)	CHIRALPAK® ZWIX(-) 3 x 150 mm (3 µm)		
Mobile Phase Composition	50mM formic acid + 25mM diethylamine in methanol / acetonitrile / water = 49 / 49 / 2		
Chromatographic Mode	Polar Phase		

Flow rate (mL/min)	0.5	Temperature (°C)	25
Injection Volume (µL)	0.0025 (mg)	Sample Concentration	
Detection	ELSD		
Elution Order	D/L		

No.	Rt	K'	Alpha Value	Resolution
1	3.5	0.95	1 - 2 1.41	3.68
2	4.2	1.35		