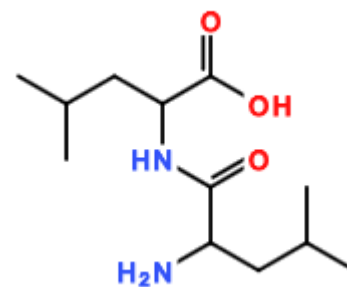


## APPLICATION RESULTS

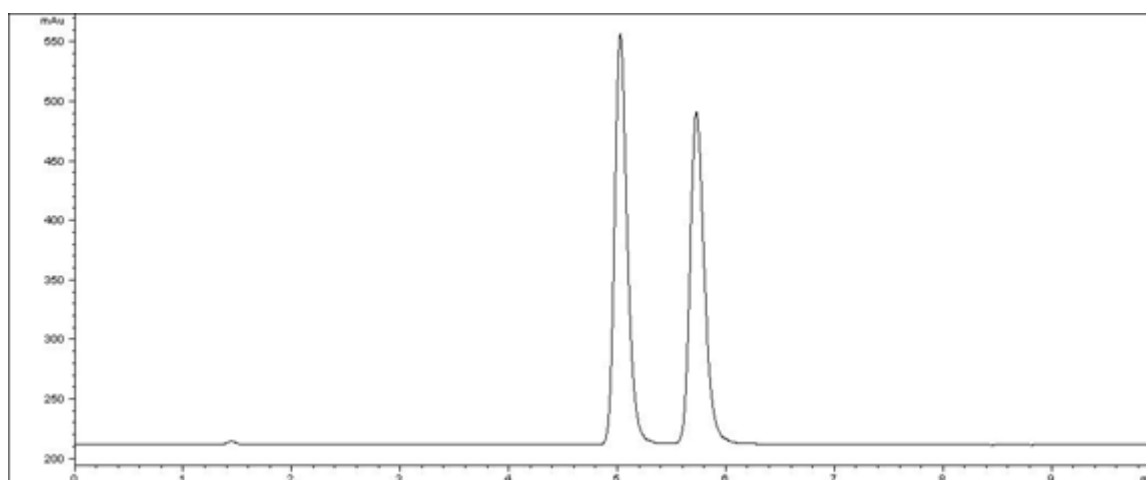
## COMPOUND IDENTIFICATION

Compound Name

DL-Leu-DL-Leu



## CHROMATOGRAM



## ANALYTICAL REPORT

|                             |  |  |  |
|-----------------------------|--|--|--|
| Column Trade Name           | CHIRALPAK® ZWIX(+)   |  |  |
| Column Size (Particle Size) | 3 x 150 mm (3 µm)  |  |  |
| Mobile Phase Composition    | 50mM formic acid + 25mM diethylamine in methanol / tetrahydrofuran / water = 49 / 49 / 2 |  |  |
| Chromatographic Mode        | Polar Phase  |  |  |

|                       |             |                      |    |
|-----------------------|-------------|----------------------|----|
| Flow rate (mL/min)    | 0.5         | Temperature (°C)     | 25 |
| Injection Volume (µL) | 0.0025 (mg) | Sample Concentration |    |
| Detection             | ELSD        |                      |    |
| Elution Order         |             |                      |    |

| No. | Rt  | K'   | Alpha Value | Resolution |
|-----|-----|------|-------------|------------|
| 1   | 5.0 | 1.81 | 1 - 2       | 3.19       |
| 2   | 5.7 | 2.20 |             |            |