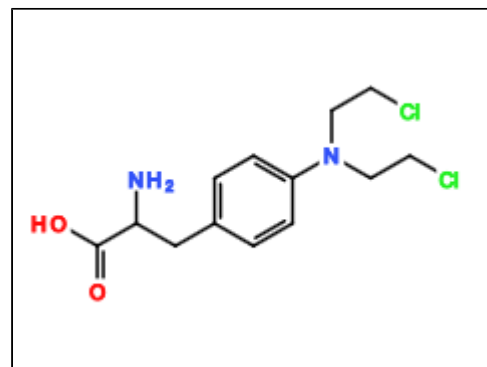


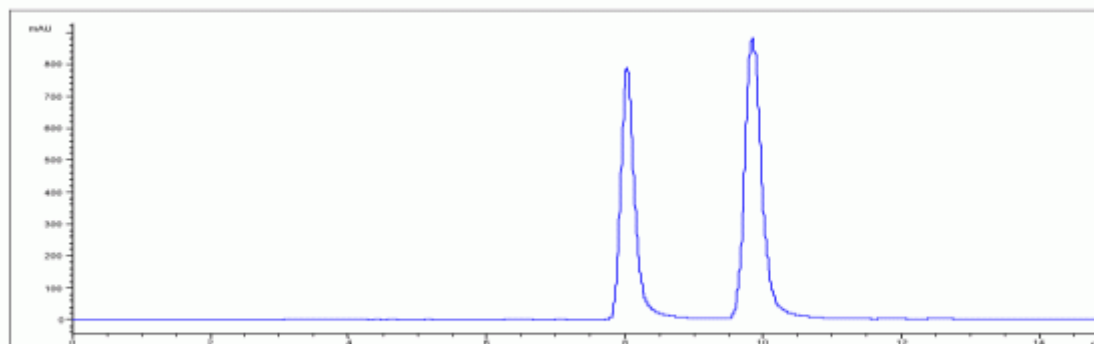
## APPLICATION RESULTS

## COMPOUND IDENTIFICATION

Compound Name	Melphalan (enriched)
---------------	----------------------



## CHROMATOGRAM



## ANALYTICAL REPORT

Column Trade Name Column Size / Particle Size	CHIRALPAK® IC 250 x 4.6mm / 5µm
Mobile Phase Composition	n-hexane / ethanol / trifluoroacetic acid / triethylamine = 90 / 10 / 0.3 / 0.1
Chromatographic Mode	Normal Phase Primary screening solvent (Immobilised CSP)

Flow rate (ml/min)	1	Injection amount (mg)	
Temperature (°C)	25	Pressure (MPa)	
Detection	UV 260 nm	Elution order	

No.	Rt	K'	Alpha Value	Resolution
1	8.03	1.68	1 - 2	4.33
2	9.83	2.28		