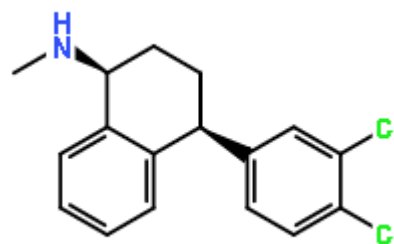


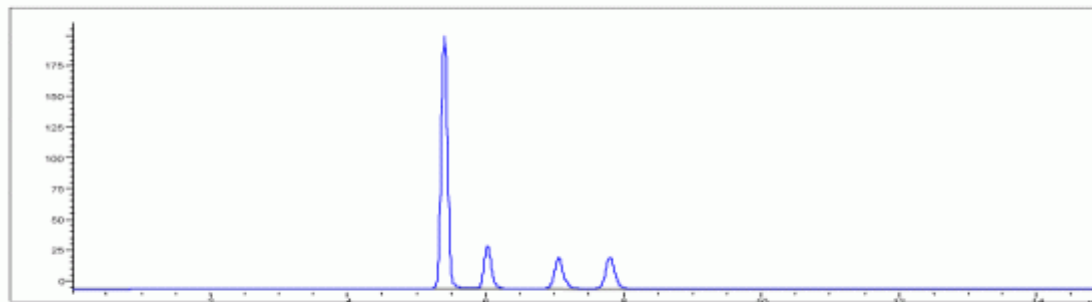
APPLICATION RESULTS

COMPOUND IDENTIFICATION

Compound Name	Sertraline (enriched)
---------------	-----------------------



CHROMATOGRAM



ANALYTICAL REPORT

Column Trade Name Column Size / Particle Size	CHIRALPAK® IA 250 x 4.6mm / 5µm
Mobile Phase Composition	n-hexane / ethanol / methanol / diethylamine = 98 / 1 / 1 / 0.1
Chromatographic Mode	Normal Phase Primary screening solvent (Immobilised CSP)

Flow rate (ml/min)	1	Injection amount (mg)	
Temperature (°C)	25	Pressure (MPa)	
Detection	UV 270 nm	Elution order	

No.	Rt	K'	Alpha Value	Resolution
1	5.42	0.81	1 - 2 1.25	3.6
2	6.03	1.01	2 - 3 1.34	5
3	7.06	1.35	3 - 4 1.18	3.2
4	7.81	1.6		