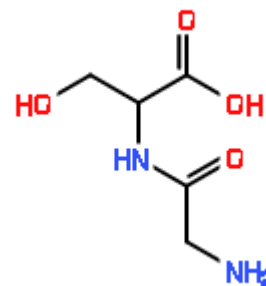


## APPLICATION RESULTS

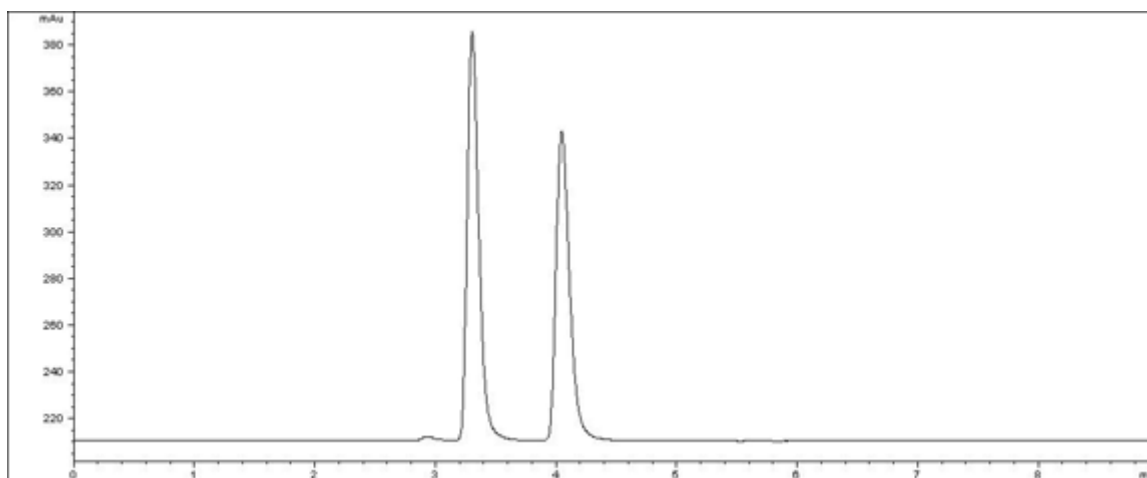
## COMPOUND IDENTIFICATION

Compound Name

Gly-DL-Ser



## CHROMATOGRAM



## ANALYTICAL REPORT

Column Trade Name Column Size / Particle Size	CHIRALPAK® ZWIX(+) 150 x 3mm / 3µm
Mobile Phase Composition	50mM formic acid + 25mM diethylamine in methanol / water = 90 / 10
Chromatographic Mode	Polar Phase

Flow rate (ml/min)	0.5	Injection amount (mg)	0.0025
Temperature (°C)	25	Pressure (MPa)	
Detection	ELSD	Elution order	

No.	Rt	K'	Alpha Value	Resolution
1	3.3	0.82	1 - 2	4.04
2	4.05	1.23		