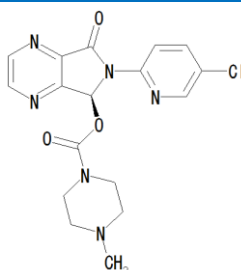


## Eszopiclone :Limit of R-isomer

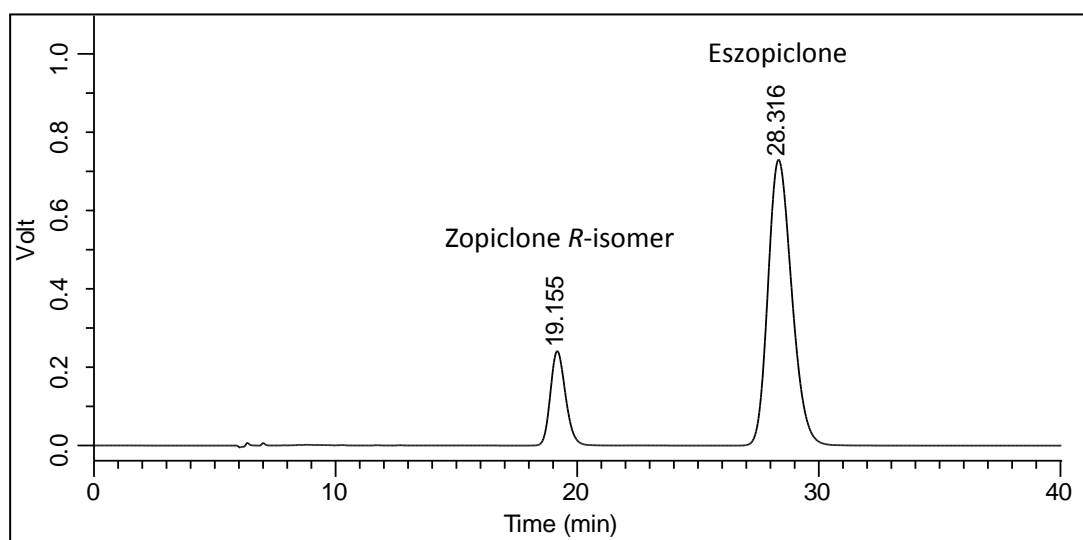


Column	: CHIRALCEL® OD-H 0.46cmΦ × 25cmL (L40)
Mobile phase	: Absolute alcohol / Diethylamine = 1000 / 1 ( v / v)
Flow rate	: 0.5mL/min.
Injection volume	: 20μL
UV detection	: 303nm

### System suitability test

Sample: 0.5 mg/mL of USP Eszopiclone RS and 0.1 mg/mL of USP Zopiclone *R*-isomer RS prepared as follows. Transfer suitable amounts of USP Eszopiclone RS and USP Zopiclone *R*-isomer RS to an appropriate volumetric flask. Add 20% of the flask volume of dichloromethane. Sonication may be used to promote dissolution. Dilute with absolute alcohol to volume.

Relative retention times: Zopiclone *R*-isomer and Eszopiclone are 0.7 and 1.0, respectively



	Requirement	Result
Resolution	$\geq 3.0$	6.1

*For details of monograph, please check pharmacopeia.*