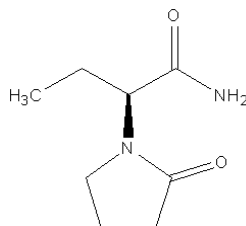


Levetiracetam :Limit of *R*-Enantiomer

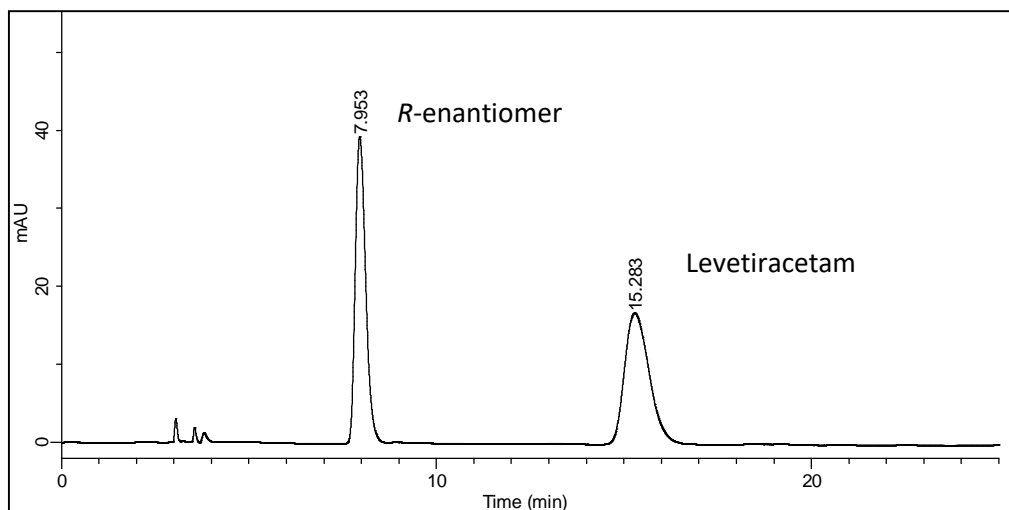


Column : CHIRALPAK® AD 0.46cmΦ × 25cmL (L51)
 Mobile phase : *n*-Hexane / dehydrated alcohol = 80 / 20 (v / v)
 Flow rate : 1.0mL/min.
 Injection volume : 20μL
 UV detection : 215nm

System suitability

Sample: 0.1 mg/mL of USP Levetiracetam Racemic Mixture RS in *Mobile phase*

Relative retention time: Levetiracetam *R*-enantiomer and Levetiracetam *S*-enantiomer are 0.55 and 1.0, respectively.



	Requirement	Result
Resolution	>4.0	8.5

For details of monograph, please check pharmacopeia.