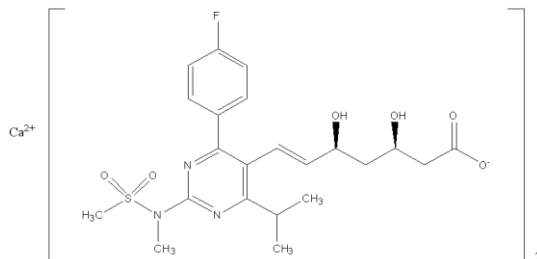


## Rosuvastatin Calcium :Enantiomeric purity

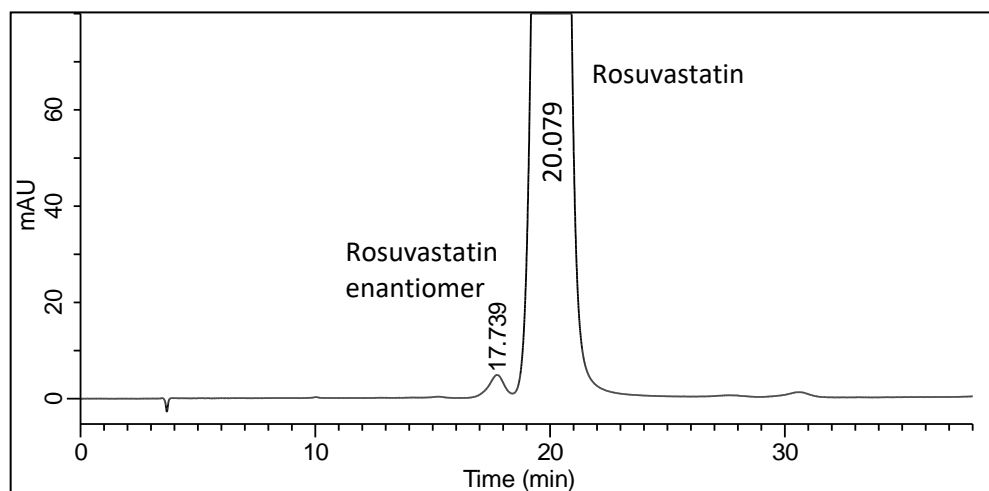


Column : CHIRALCEL® OJ-RH 0.46cmΦ × 15cmL (L107)  
 Mobile phase : Acetonitrile / 0.1% Trifluoroacetic acid in water = 25 / 75 (v / v)  
 Flow rate : 0.5mL/min.  
 Injection volume : 10μL  
 Column temperature : 35°C  
 UV detection : 242nm

### System suitability

Sample: 1 mg/mL of USP Rosuvastatin Calcium RS and  
 0.004 mg/mL of USP Rosuvastatin Enantiomer RS in Diluent.

Relative retention time: Rosuvastatin enantiomer and Rosuvastatin  
 are 0.9 and 1.0, respectively.



	Requirement	Result
Resolution	$\geq 1.5$	1.84
Tailing factor (for Rosuvastatin peak)	$\leq 1.8$	0.97

*For details of monograph, please check pharmacopeia.*