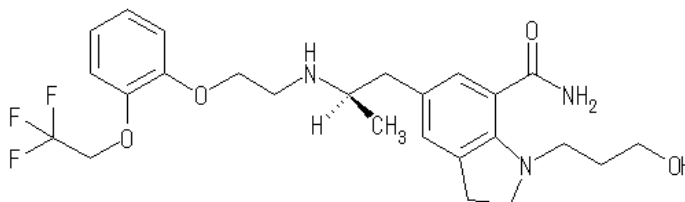


Silodosin :Optical isomer

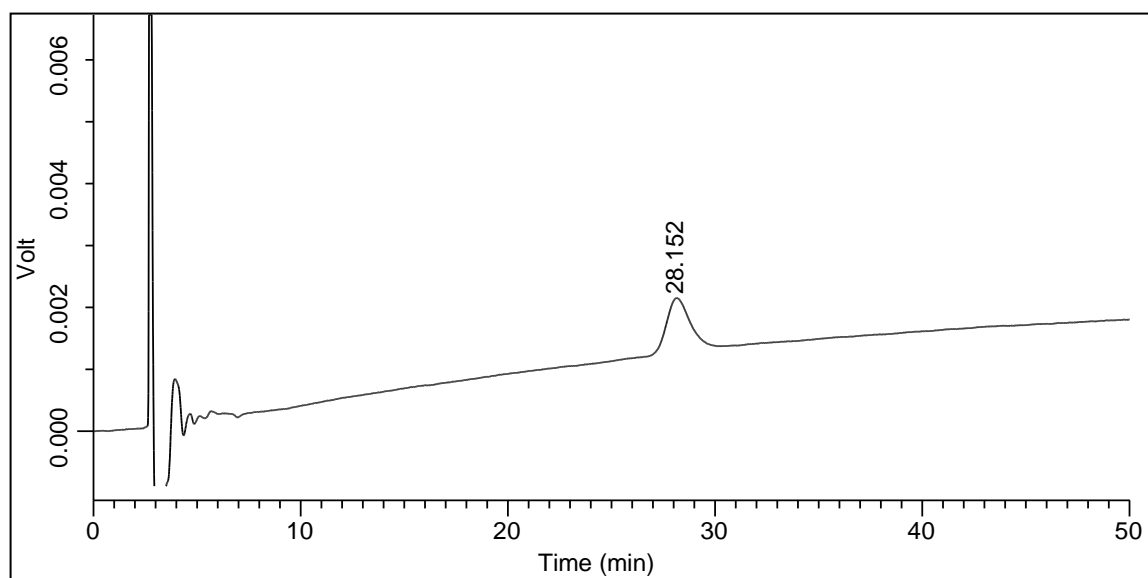


Column : CHIRALCEL® OJ 0.46cmΦ × 25cmL
 Mobile phase : hexane / diethylamine / ethanol = 93 / 10 / 7 (v / v / v)
 Injection volume : 5μL
 Column temperature : 40°C
 UV detection : 270nm

System suitability

Sample solution : Dissolve 0.1 g of Silodosin in 10 mL of ethanol (99.5).

Standard solution : Pipet 1 mL of the sample solution, add ethanol (99.5) to make exactly 200 mL. Pipet 3 mL of this solution, add ethanol (99.5) to make exactly 10 mL.



| | Requirement | Result |
|------------------------------|-------------|--------|
| Number of theoretical plates | ≥ 1000 | 4453 |
| Symmetry factor | ≤ 1.5 | 1.15 |
| System repeatability* | ≤ 5% | 1.5% |

* When the test is repeated 6 times with 5 μL of the standard solution under the above operating conditions, the relative standard deviation of the peak area of silodosin is not more than 5%