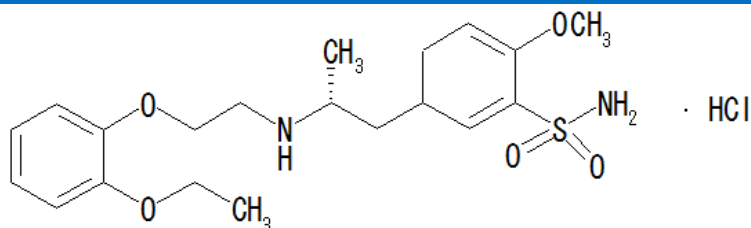


Tamsulosin Hydrochloride :Enantiomeric Purity

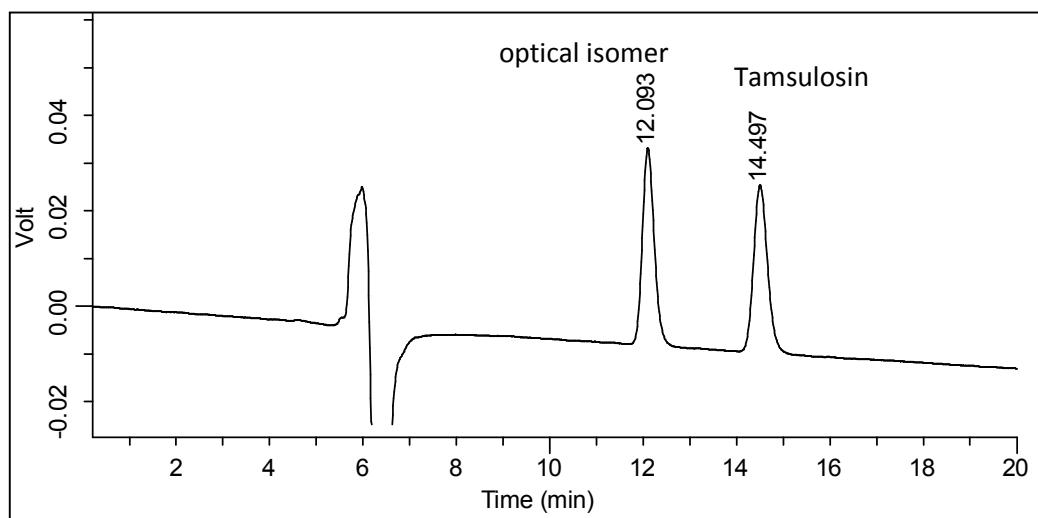


Column : CHIRALPAK® AD-H 0.46cmΦ × 25cmL (L51)
 Mobile phase : Hexane / dehydrated alcohol / Methanol / Diethylamine = 650 / 200 / 150 / 1 (v / v / v / v)
 Flow rate : 0.5mL/min.
 Injection volume : 10μL
 Column temperature : 40°C
 UV detection : 225nm

System suitability

Sample: 40 μg/mL of USP Racemic Tamsulosin Hydrochloride RS in methanol

Relative retention time: The optical isomer and Tamsulosin are 0.8 and 1.0, respectively.



	Requirement	Result
Resolution	≥ 2	4.7