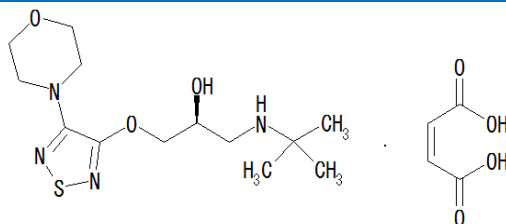


Timolol Maleate :Enantiomeric Purity

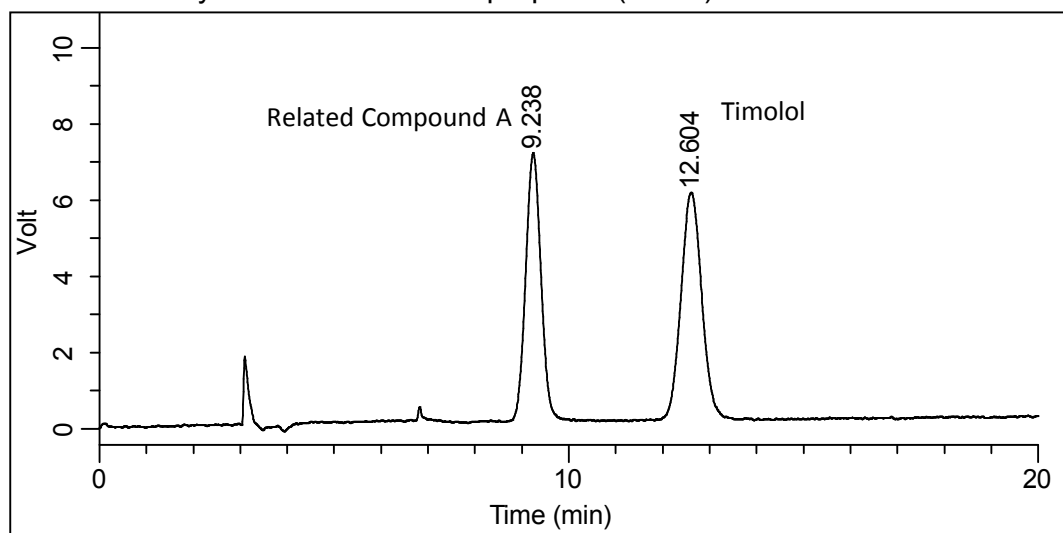


Column : CHIRALCEL[®] OD-H 0.46cmΦ × 25cmL (L40)
 Mobile phase : Hexane / 2-Propanol / Diethylamine = 960 / 40 / 2 (v / v / v)
 Flow rate : 1.0mL/min.
 Autosampler temp. : 4°C
 Injection volume : 5μL
 UV detection : 297nm

System suitability test

Sample: 0.03 mg/mL each of USP Timolol Maleate RS and USP Timolol Related Compound A RS in *Diluent*.

Diluent: Methylene chloride and 2-propanol (25:75)



	Requirement	Result
Resolution	≥ 4.0	4.8
Relative standard deviation	$\leq 1.5\%$	0.65 (Related Compound A) 0.79 (Timolol)
Signal to noise ratio (for Related Compound A)	≥ 10	107