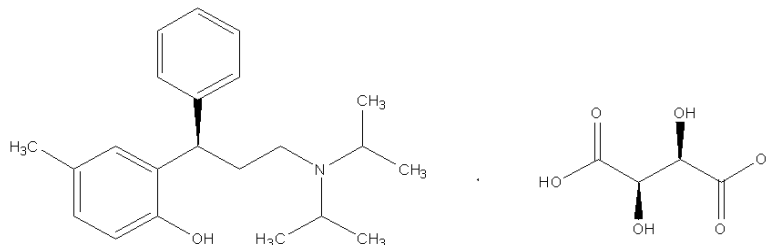


Tolterodine Tartrate:Enantiomeric Purity

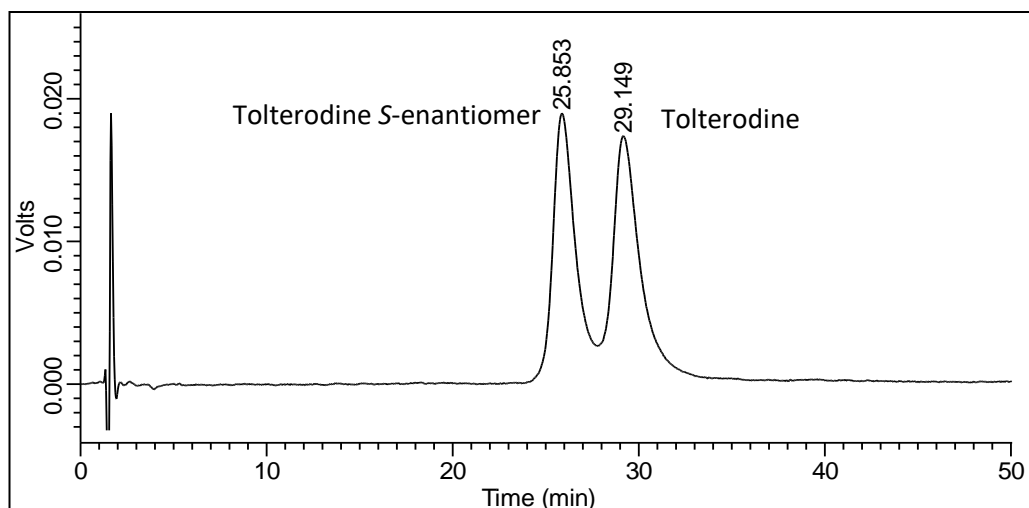


Column : CHIRALPAK® AGP 0.2cmΦ × 10cmL (L41)
Mobile phase : Add 0.97 g of tetrabutylammonium bromide to a mixture of 930 mL of *Buffer*※ and 70 mL of Isobutyl alcohol
Flow rate : 0.2mL/min.
Injection volume : 20μL
Column temperature : 25°C
UV detection : 220nm
 ※ *Buffer* : Transfer 21.0 mL of 1 M solution of monobasic sodium phosphate and 53.3 mL of 0.5 M solution of dibasic sodium phosphate dehydrate to a 1000 mL volumetric flask, and dilute with water to volume. Dilute 100.0 mL of this solution with water to 1000.0 mL (Buffer solution with pH 7.1)

System suitability

Sample : 0.02 mg/mL each of USP Tolterodine Tartrate RS and USP Tolterodine S- enantiomer RS in *mobile phase*.

Relative retention time: Tolterodine S-enantiomer and Tolterodine are 0.9 and 1.0, respectively.



	Requiment	Result
Resolution	≥ 1.4	1.44
Column efficiency (for Tolterodine peak)	≥ 1500	2242

For details of monograph, please check pharmacopeia.