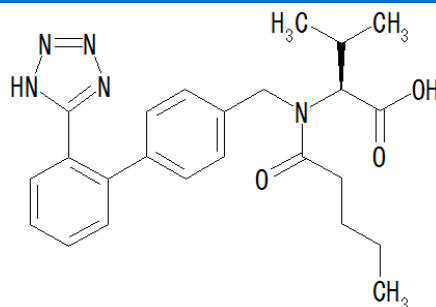


U.S. Pharmacopeia method



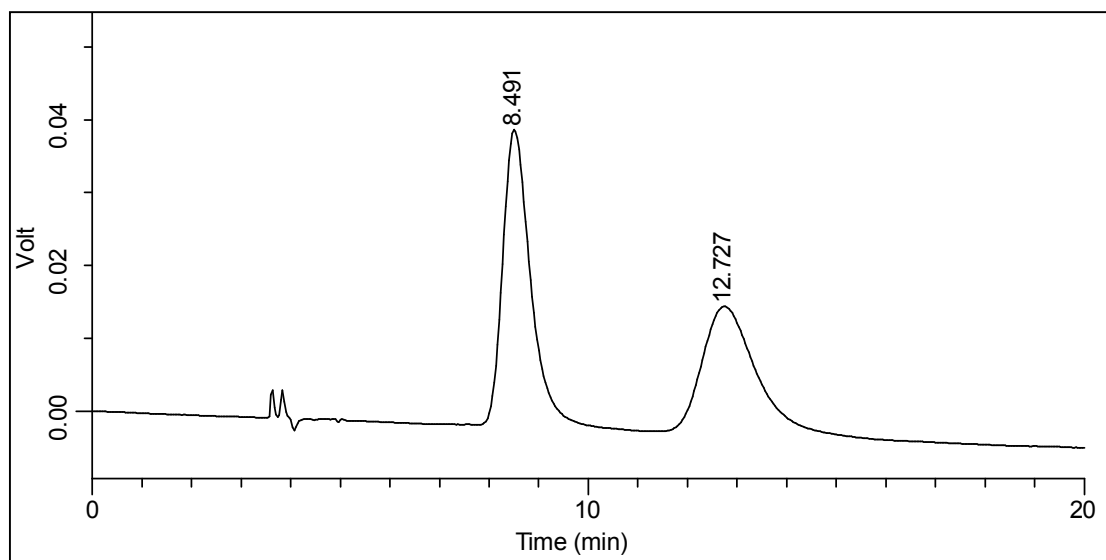
Valsartan :Limit of Valsartan Related Compound A



Column : CHIRALCEL® OD-H 0.46cmΦ × 25cmL (L40)
Mobile phase : n-Hexane / 2-Propanol / Trifluoroacetic acid = 850 / 150 / 1 (v / v / v)
Flow rate : 0.8mL/min.
Injection volume : 10μL
UV detection : 230nm

System suitability

Sample: 0.04 mg/mL each of USP Valsartan Related Compound A and USP Valsartan RS in *Mobile phase*.



	Requirement	Result
Resolution	≥ 2.0	2.8
Relative standard deviation	$\leq 5\%$	1.1%